

**FOR LEASE OR SALE**

**Office Condo Units**



**892 Plain Street  
Marshfield, MA**

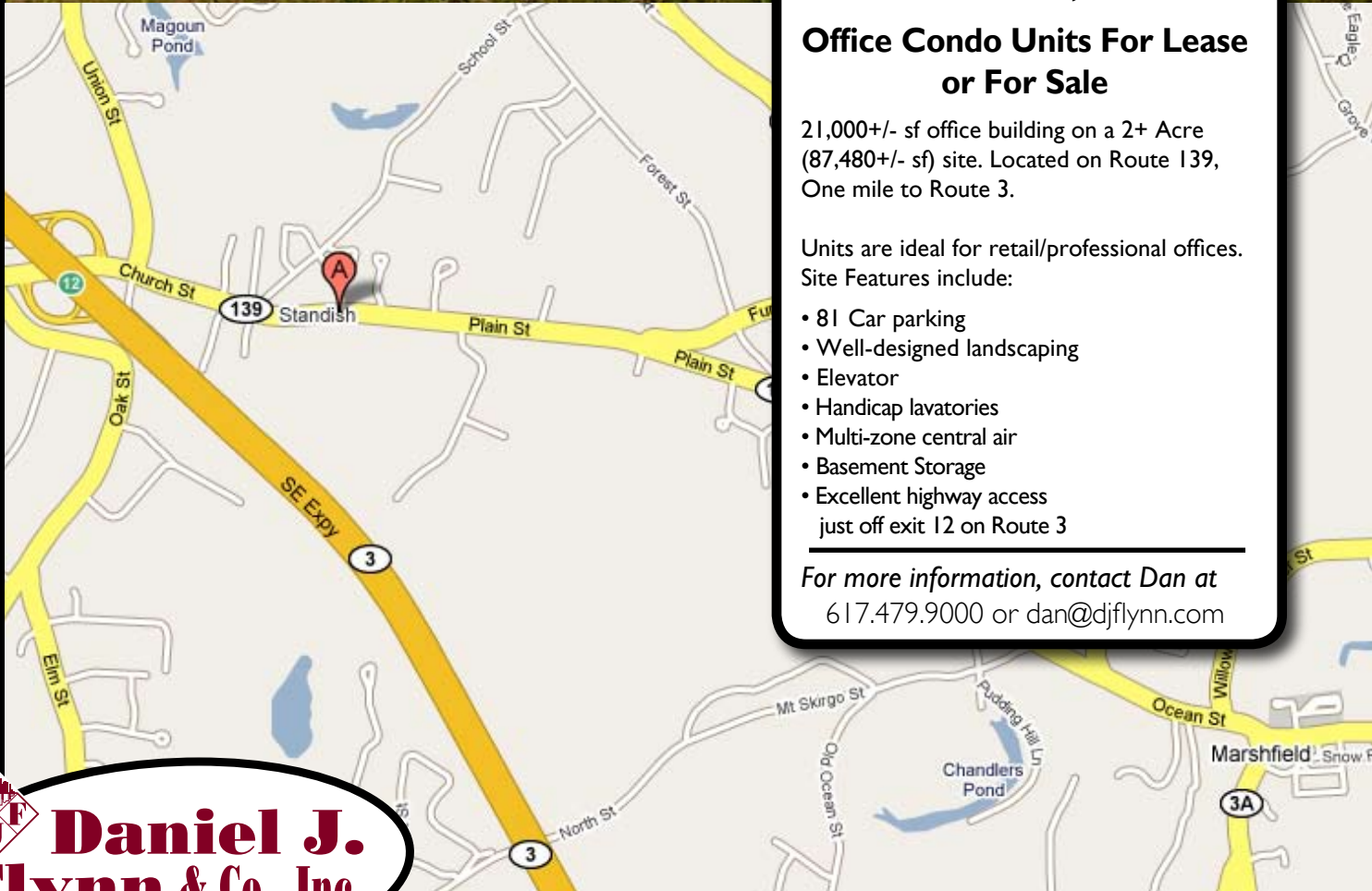
**Office Condo Units For Lease  
or For Sale**

21,000+/- sf office building on a 2+ Acre (87,480+/- sf) site. Located on Route 139, One mile to Route 3.

Units are ideal for retail/professional offices. Site Features include:

- 81 Car parking
- Well-designed landscaping
- Elevator
- Handicap lavatories
- Multi-zone central air
- Basement Storage
- Excellent highway access just off exit 12 on Route 3

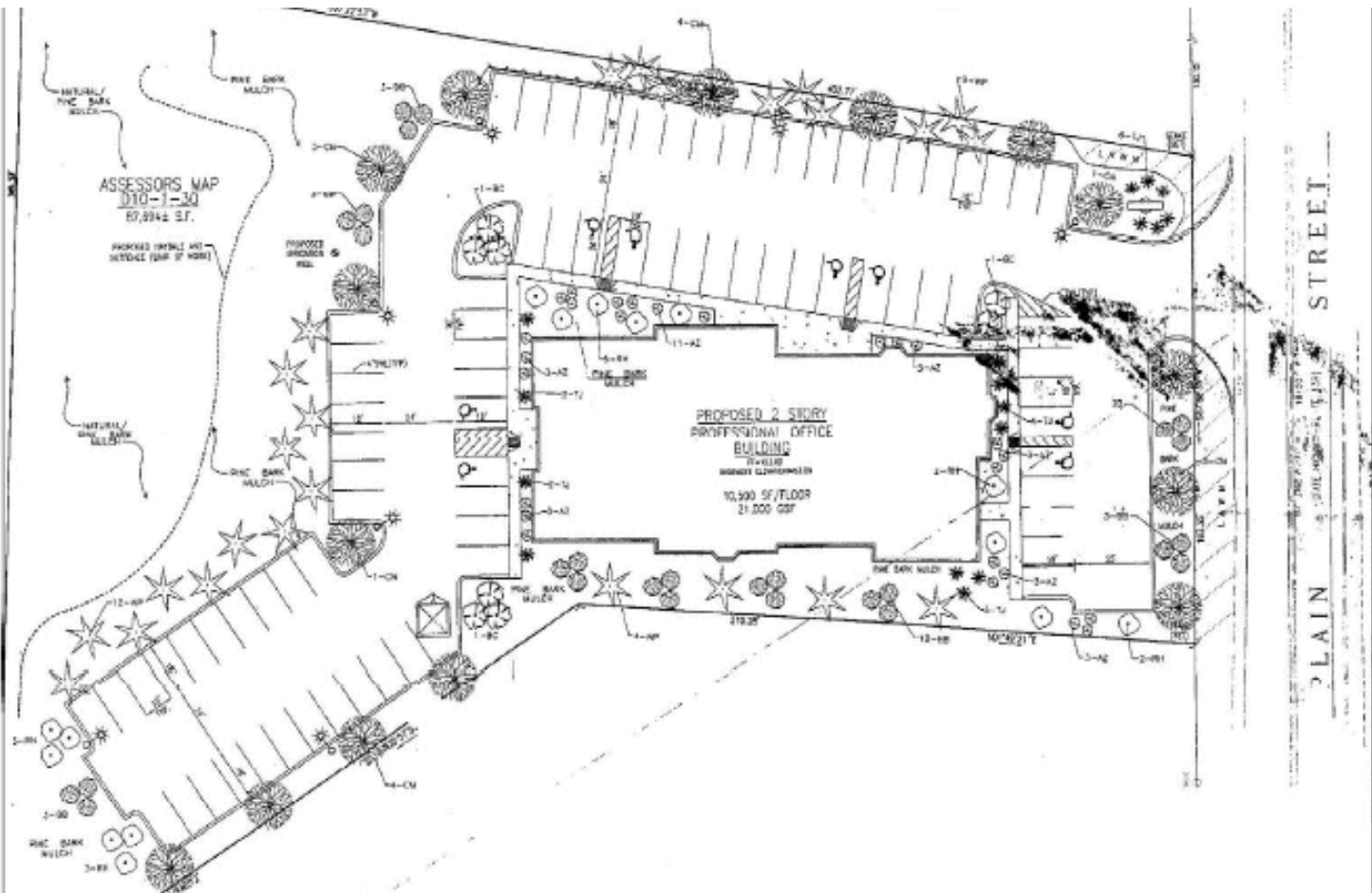
For more information, contact Dan at 617.479.9000 or dan@djflynn.com



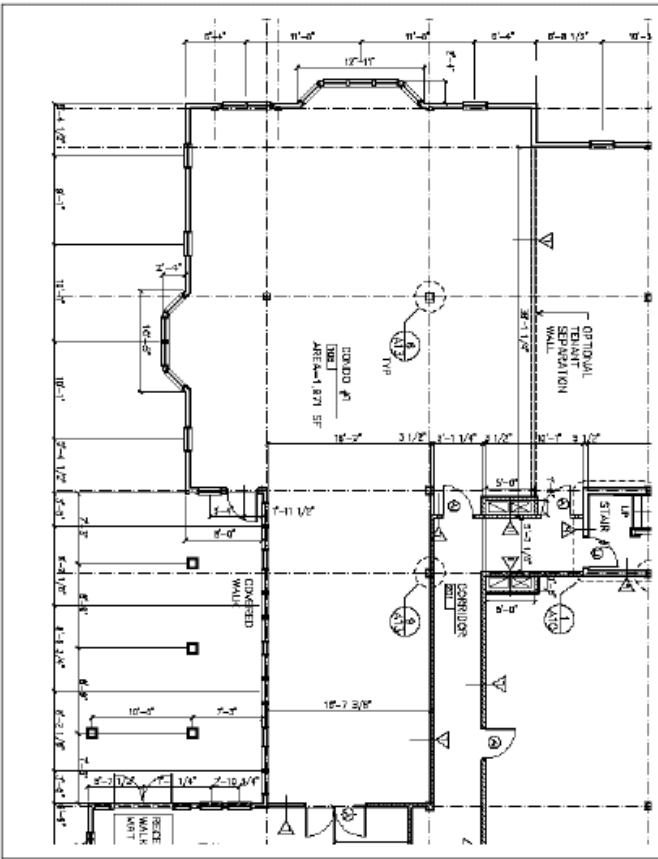
**DJF Daniel J. Flynn & Co., Inc.**  
Real Estate • Auctions

1495 Hancock Street, Quincy, MA 02169 • 617-479-9000 • www.FlynnAuctions.com • MA Lic. #300

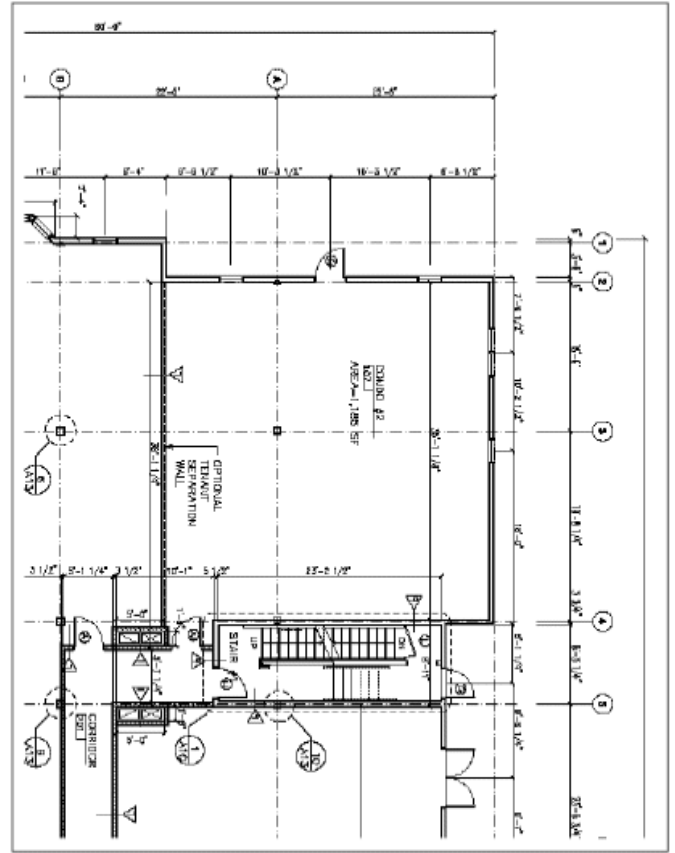
All information furnished regarding this property is from sources deemed reliable. No representation is made as to the accuracy thereof and is submitted subject to errors, omissions, change of price, rental or other conditions, prior to sale, lease, or financing, or withdrawal without notice.



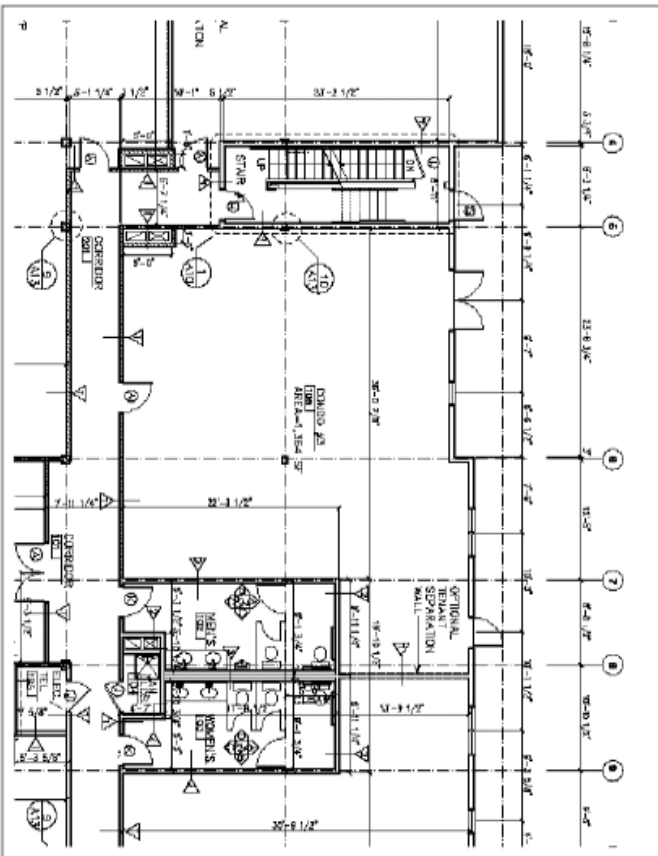
Condo Unit 1  
1,971 SF



Condo Unit 2  
1,185 SF



Condo Unit 3  
1,364 SF



Condo Unit 4  
1,776 SF

